

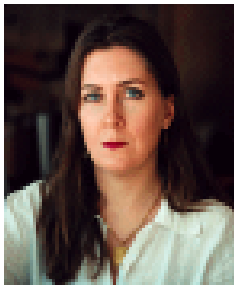
Roger W. Staehle Consulting

22 Red Fox Road
North Oaks, Minnesota 55127 USA

Telephone: (651) 482-9493
Cell Phone: (612) 889-4384
Telefax (651) 484-5735

Email: rwstaehle@rwstaehle.com
Web: www.staehleconsulting.com

Staff and Office



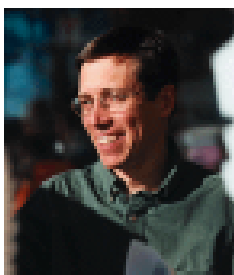
Mary Elizabeth Ilg

Office Management Associate
M.F.A., B. A. English, minor in French, certified
paralegal, published writer
E mail: maryilg@rwstaehle.com



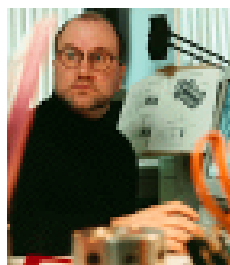
Barbara Lea

Data Base Associate
B. A. Humanities
B.F.A Painting and Drawing, exhibiting artist
E mail: barblea@rwstaehle.com



Tim Springfield

Case Administration Associate
Ph.D. (ABD) English
Adjunct Faculty, University of St. Thomas, Dept. of English
E mail: tims@rwstaehle.com



John Ilg

Technical Illustration
B.F.A. summa cum laude Painting and Drawing,
M.F.A, Fine Art, Technical Drafting
Exhibiting artist
E mail: jcilg@aol.com



Nancy Clasen

Document Research and Acquisition
Legal Research Center, Inc.
M.A. History; M.L.S. Library Science (ABD)
E mail: nclasen@lrci.com



George W. Staehle

Computer integration, operating systems
Principal, StaehleTech
10th Grade High School
E mail: george@rwstaehle.com
Web: www.StaehleTech.com